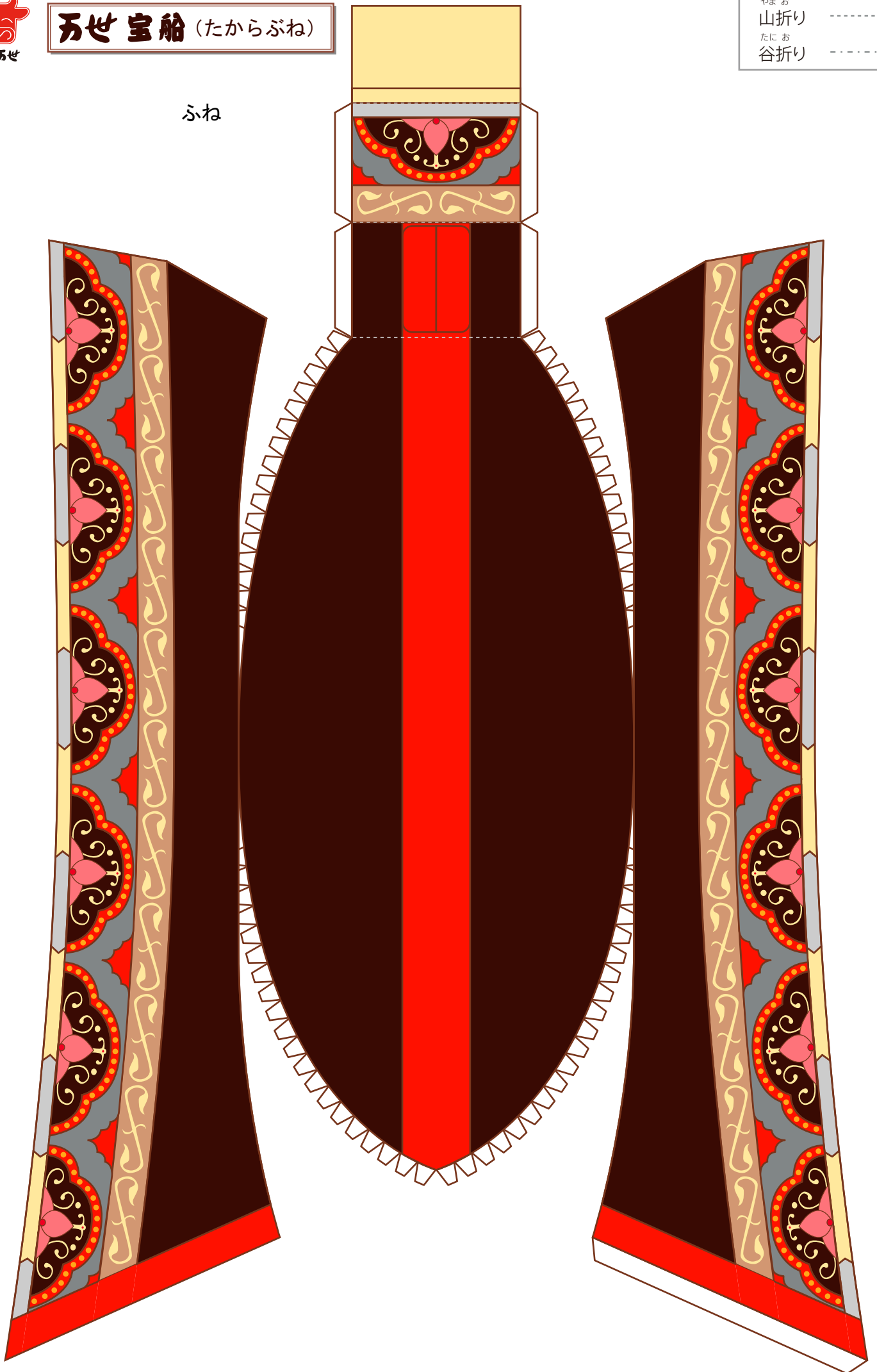




万世宝船 (たからぶね)

ふね

やまお  
山折り -----  
たにお  
谷折り -----

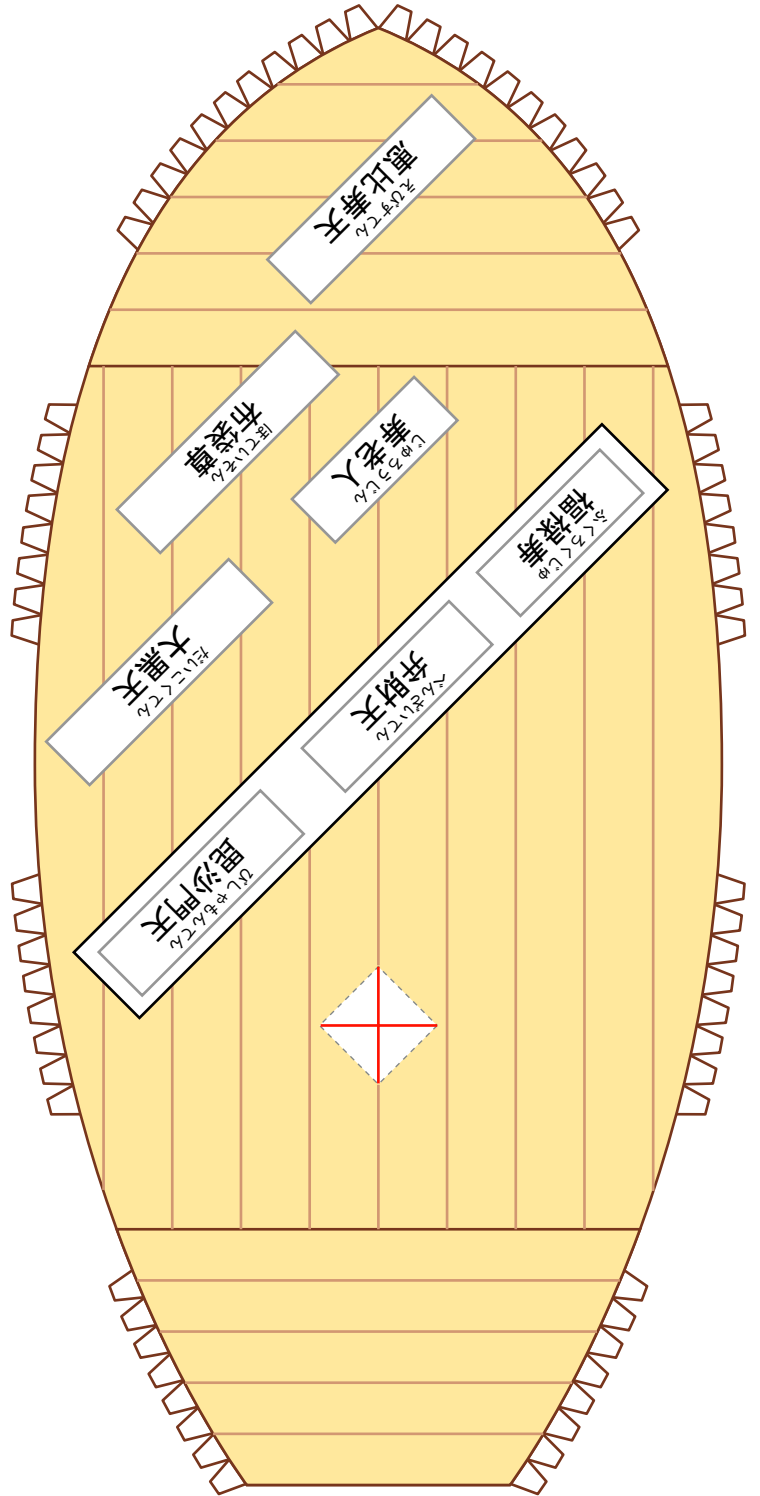
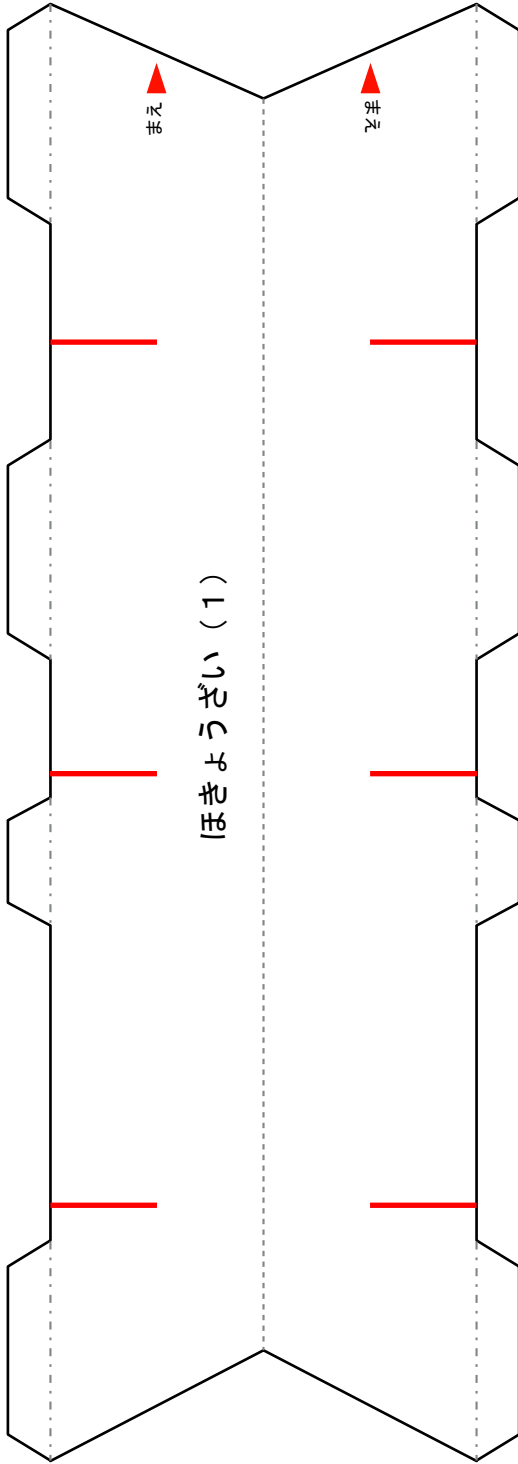




# 万世宝船 (たからぶね)

やまお	.....
山折り	.....
たにお	.....
谷折り	.....

## かんぱん

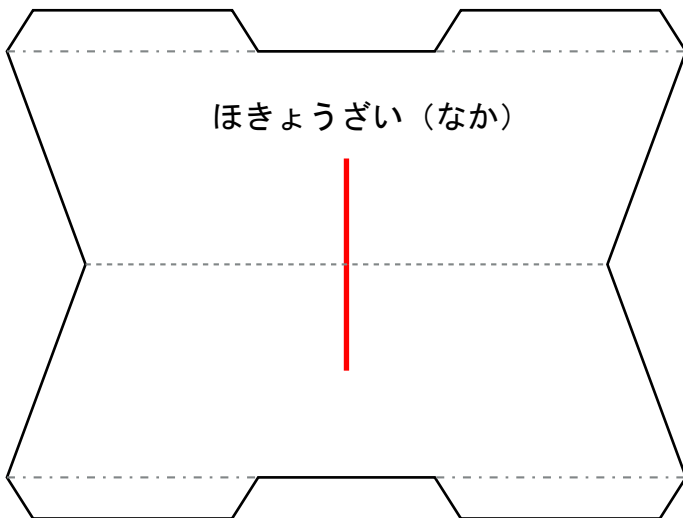
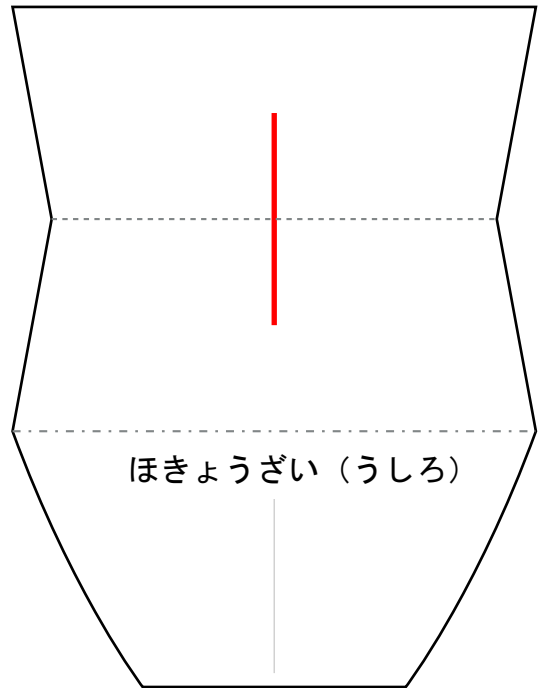
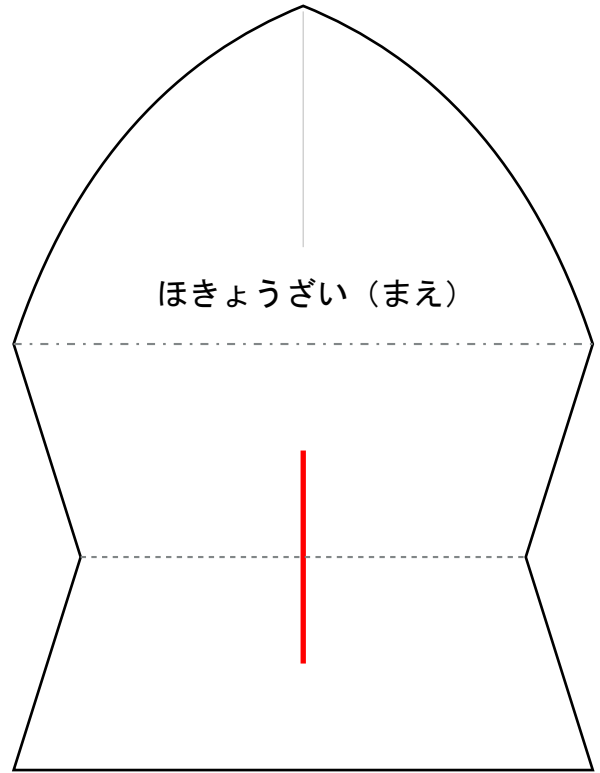
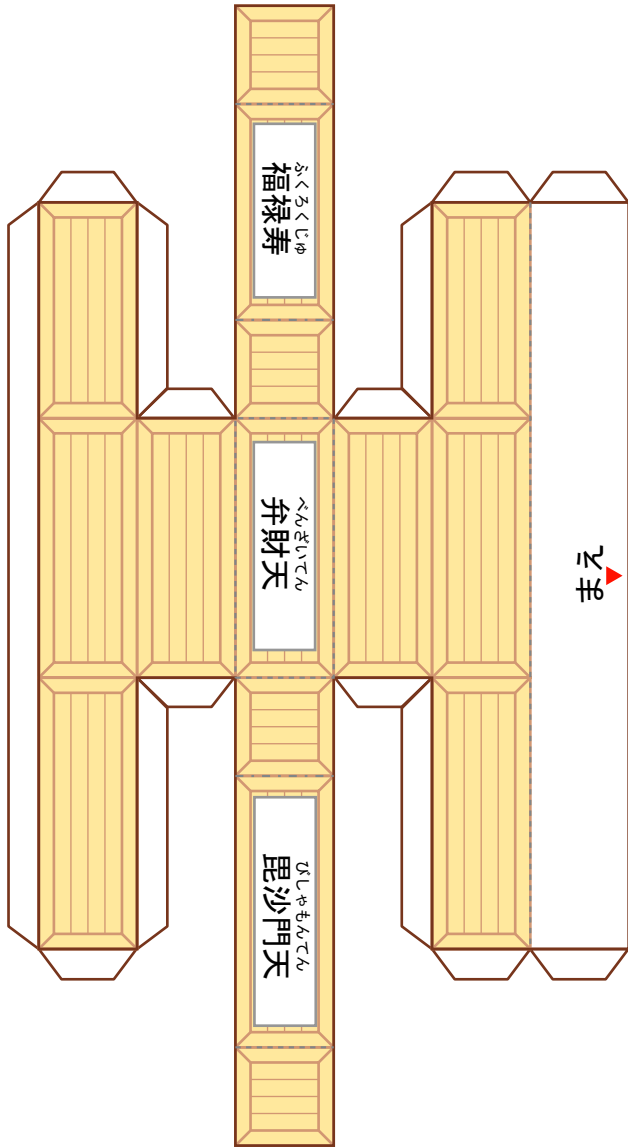




# 万世宝船 (たからぶね)

やまお	山折り	-----
たに	谷折り	-----

だ い ざ

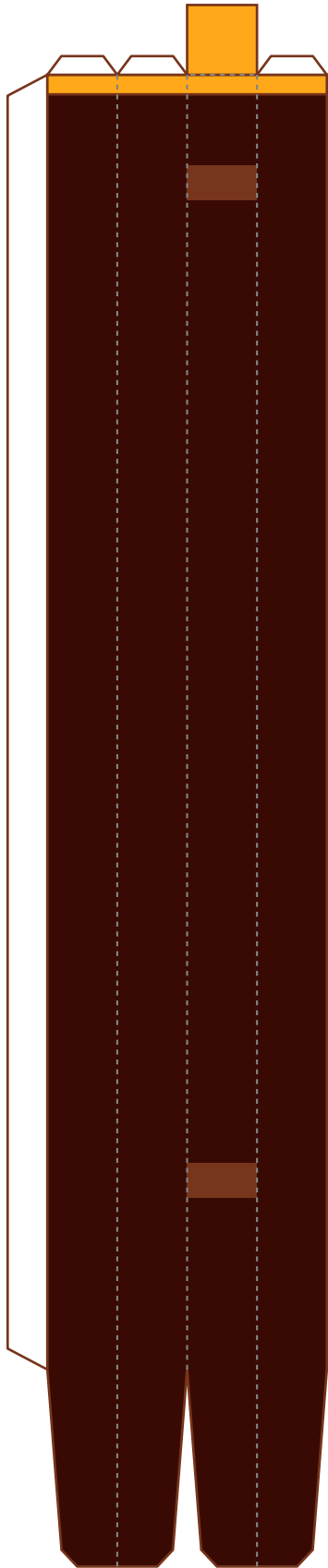




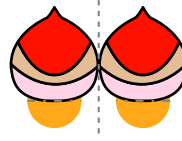
# 万世宝船 (たからぶね)

やまお  
山折り .....  
たにお  
谷折り .....  
谷折り

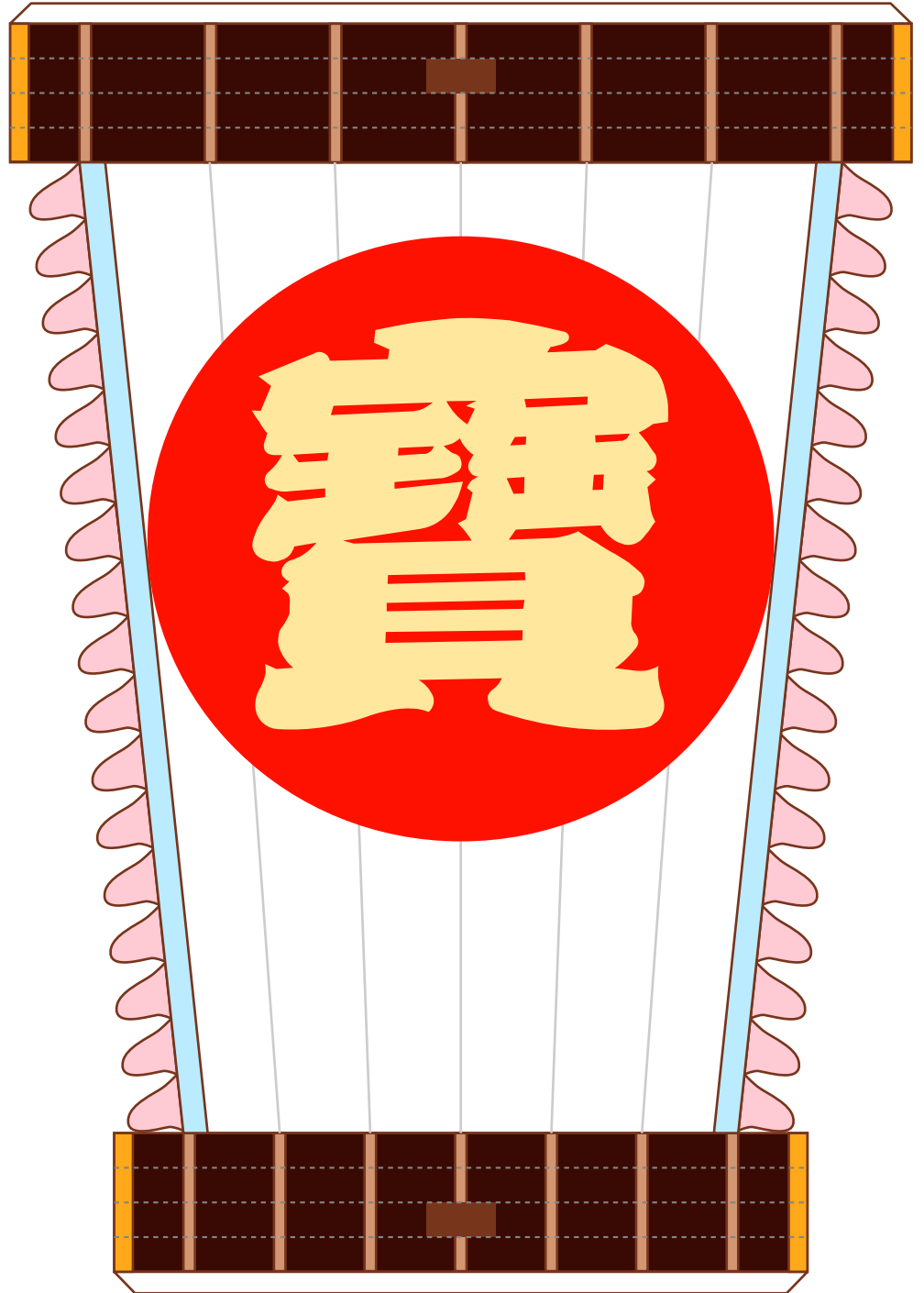
ほばしら



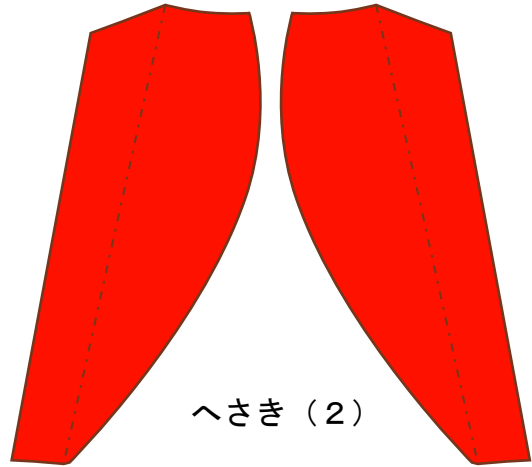
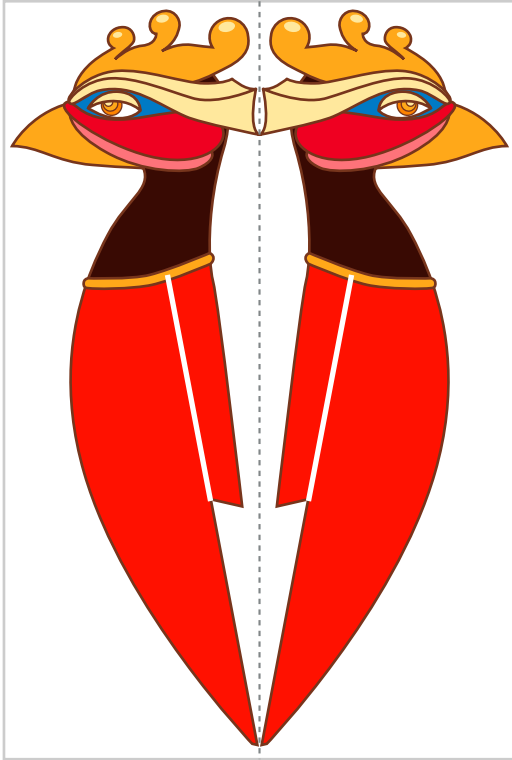
かざり



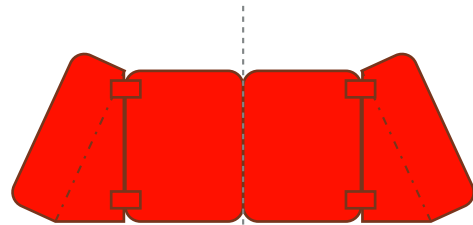
ほ



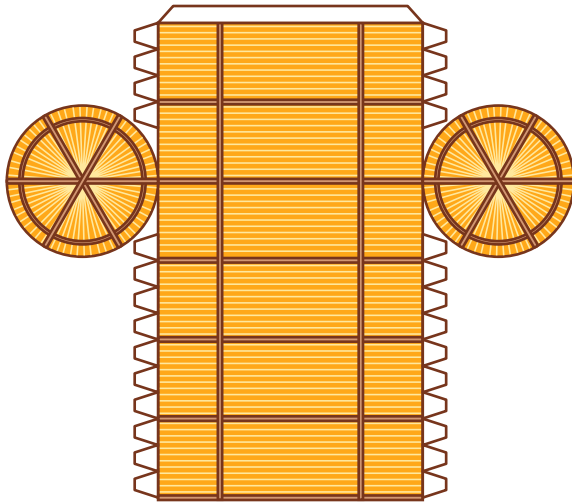
へさき (1)



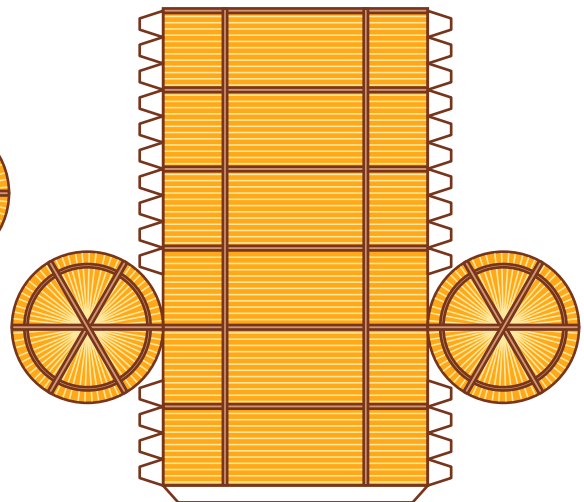
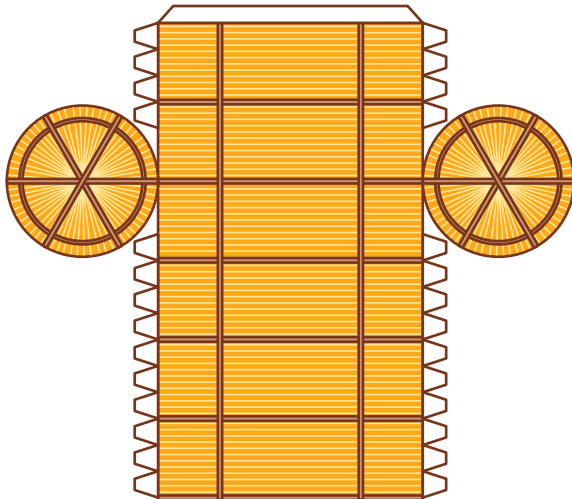
へさき (2)



かじ



こめだわら





# 万世宝船 (たからぶね)

しちふくじん  
七福神

やまお  
山折り .....  
たにお  
谷折り .....

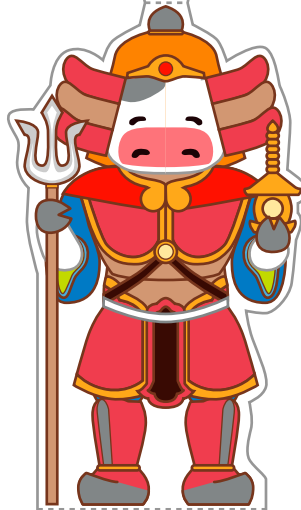
寿老人  
じゆらうじん



弁財天  
へんさいてん



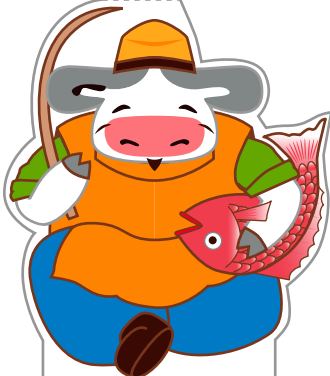
毘沙門天  
ひしゃもんてん



福祿寿  
ふくろくじゆ



恵比寿天  
えびすてん



大黒天  
だいこくてん



布袋尊  
ぼたいそん

